
FOR IMMEDIATE RELEASE

DATE: July 26, 2021, 16:30hrs
MEDIA CONTACT: Stacey Raftus, EOC Information Officer
PHONE/EMAIL: 250-550-3712 | stacey.raftus@rdno.ca

Evacuation Alert Issued for Pinaus Lake, South to Bouleau Lake

Based upon recommendation from the BC Wildfire Service, an Evacuation Alert has been issued by Regional District North Okanagan (RDNO) at the Emergency Operations Centre due to a wildfire at White Rock Lake (#K61884).

Because of the potential danger to life and health, and a large number of recreation sites within the proximity of Pinaus Lake and Bouleau Lake, the RDNO has issued an Evacuation Alert for the following areas:

[North and East of, and including Pinaus Lake – running South to include Bouleau Lake.](#)

[East and South of Bouleau Lake – running west to the Thompson Nicolas Regional District Evacuation Alert and Order \(South and parallel to Salmon River Fire Service Road\)](#)

[This area could include egress routes from the backcountry within the mapped area.](#)

An Evacuation Alert has been issued to prepare you to evacuate your premises, property or recreational site within the mapped area should it be found necessary. Residents will be given as much advance notice as possible prior to evacuation; however you may receive limited notice due to changing conditions.

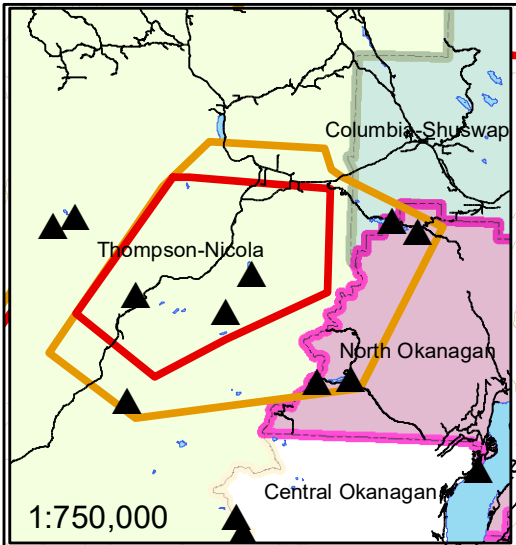
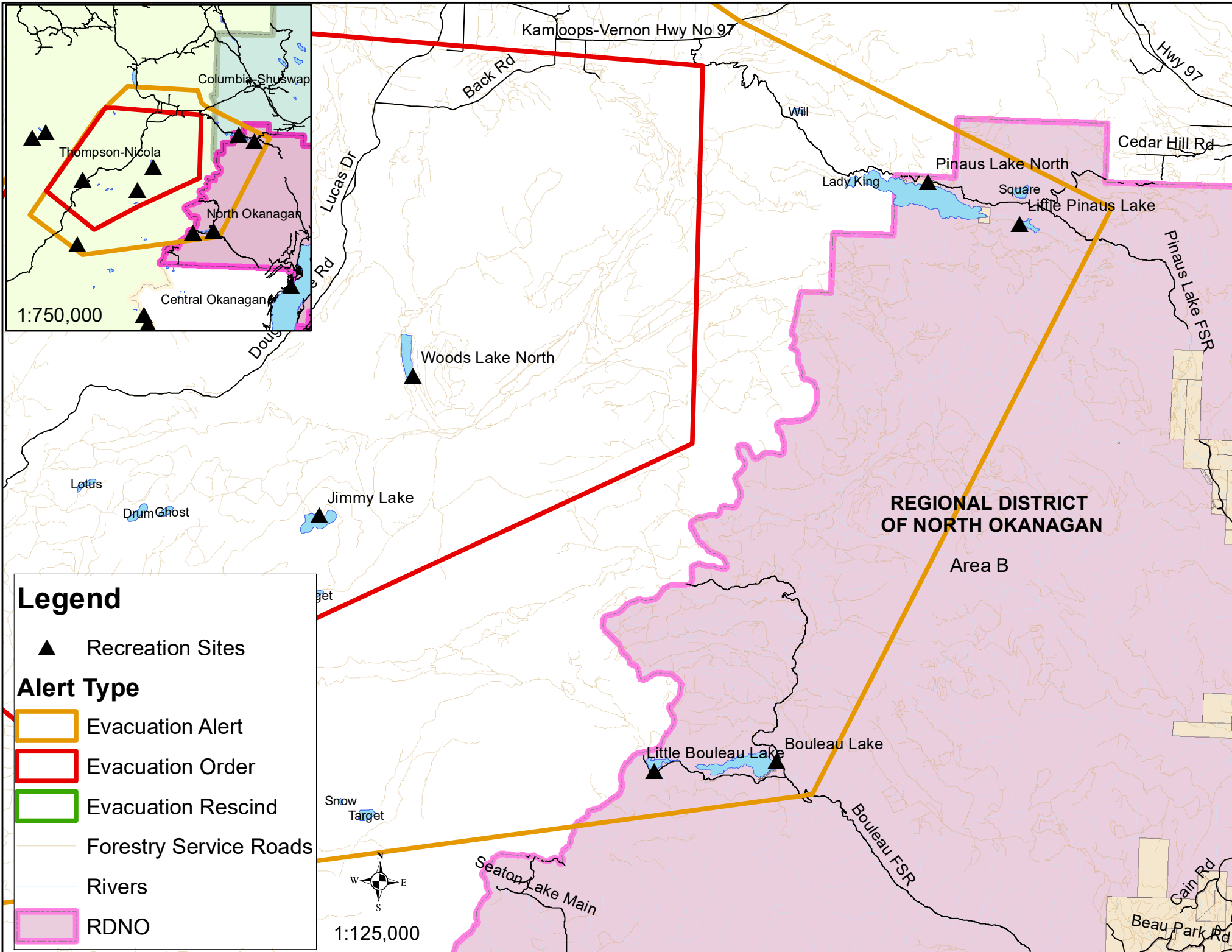
Please note: The attached map is not specific to any particular address within the evacuation alert boundary, but a general guideline. Any property in close proximity to the area should be prepared, and ready to evacuate during threatened times. **See map of Evacuation Alert area attached.**

WHAT YOU SHOULD DO:

- Locate family members and designate a meeting area outside the evacuation area should an Evacuation Order be called while separated.
- Pack essential items such as government issued ID, medications, eyeglasses, valuable papers, immediate care needs for dependents and, if time and space permits, keepsakes for quick departure.
- Prepare to move persons with disabilities, children or neighbours, if assistance is needed.
- Prepare to take pets with you and move livestock to a safe area (if possible).

- Arrange transportation for all household members. Fill the gas tanks of personal vehicles.
- Arrange accommodation for all members of the residence, if possible.
- Wait for an Evacuation Order to be issued before evacuating.
- Monitor the news, radio and online sources for information on evacuation orders and location of Reception Centres.

Further information will be issued as updates are received from the BC Wildfire Service. Residents are encouraged to or visit www.rdno.ca, the [RDNO Facebook page](#), and listen to local radio for more information.



Legend

- ▲ Recreation Sites

Alert Type

- Evacuation Alert
- Evacuation Order
- Evacuation Rescind
- Forestry Service Roads
- Rivers
- RDNO

Scale: 1:125,000

