
FOR IMMEDIATE RELEASE

DATE: July 27, 2021, 13:47 hrs
MEDIA CONTACT: Ashley Gregerson, EOC Information Officer
PHONE/EMAIL: 250-550-3707 | ashley.gregerson@rdno.ca

Evacuation Order Issued for Pinaus Lake, South to Bouleau Lake, with Additional Evacuation Alert Issued

Based upon the recommendation from the BC Wildfire Service, the Regional District of North Okanagan has issued an Evacuation Order due to a wildfire at White Rock Lake (#K61884). In addition to issuing the Order an Evacuation Alert has been issued for the neighbouring area.

EVACUATION ORDER

Members of the local police department and other applicable agencies will be expediting the Evacuation Order. Evacuees will not have access to their houses while the Order is in place; therefore, bring your pets and important items with you. **See Evacuation Order/Alert area map attached.**

Because of the immediate danger to life safety, the Evacuation Order includes the following areas:

[North and east of, and including Pinaus Lake, running south to include Bouleau Lake, east and south of Bouleau Lake and then west to the Thompson Nicola Regional District areas of evacuation alert and order \(south of and parallel to Salmon River Forest Service Road\).](#)

[The area includes multiple recreation sites in proximity of Pinaus Lake and Bouleau Lakes.](#)

The Evacuation ORDER applies to approximately 20 properties, including seasonal dwellings.

IF YOU ARE IN THIS AREA, YOU MUST LEAVE THE AREA IMMEDIATELY.

WHAT YOU SHOULD DO:

- Shut off all gas and electrical appliances, other than refrigerators and freezers.
- Close all windows and doors.
- Close gates (latch) - but do not lock.
- Take critical items (medicine, purse, wallet, and keys) only if they are immediately available. Take pets in pet kennels or on leash.
- Gather your family and, if you have room, take a neighbour or someone needing transportation. Do not use more vehicles than you have to.
- Do not use the telephone unless you need emergency services.
- Follow the evacuation route provided as follows:

- From Pinaus Lake area: travel **east** along the **Pinaus-Square Lake Forest Service Road (6020.03)**. This route connects to Cedar Hill Road, a public road, and junctions with Provincial Highway 97.
- From Bouleau lake: travel **east** on Bouleau Forest Service Road to Whiteman Creek Forest Service Road, heading northeast to Westside Road.
- Once you are evacuated, register as an evacuee online at <https://ess.gov.bc.ca>

EVACUATION ALERT

Because of the potential danger to life and health, in addition to the above Evacuation Order the RDNO has issued an Evacuation Alert for the following areas:

[Electoral Area B: east of Thompson Nicola Regional District and Columbia Shuswap Regional District \(CSRD\), north of Central Okanagan Regional District, west of Okanagan Indian Band Territory IR#1, and south of CSRD.](#)

An Evacuation Alert has been issued to prepare you to evacuate your premises, property or recreational site within the mapped area should it be found necessary. Residents will be given as much advance notice as possible prior to evacuation; however, you may receive limited notice due to changing conditions.

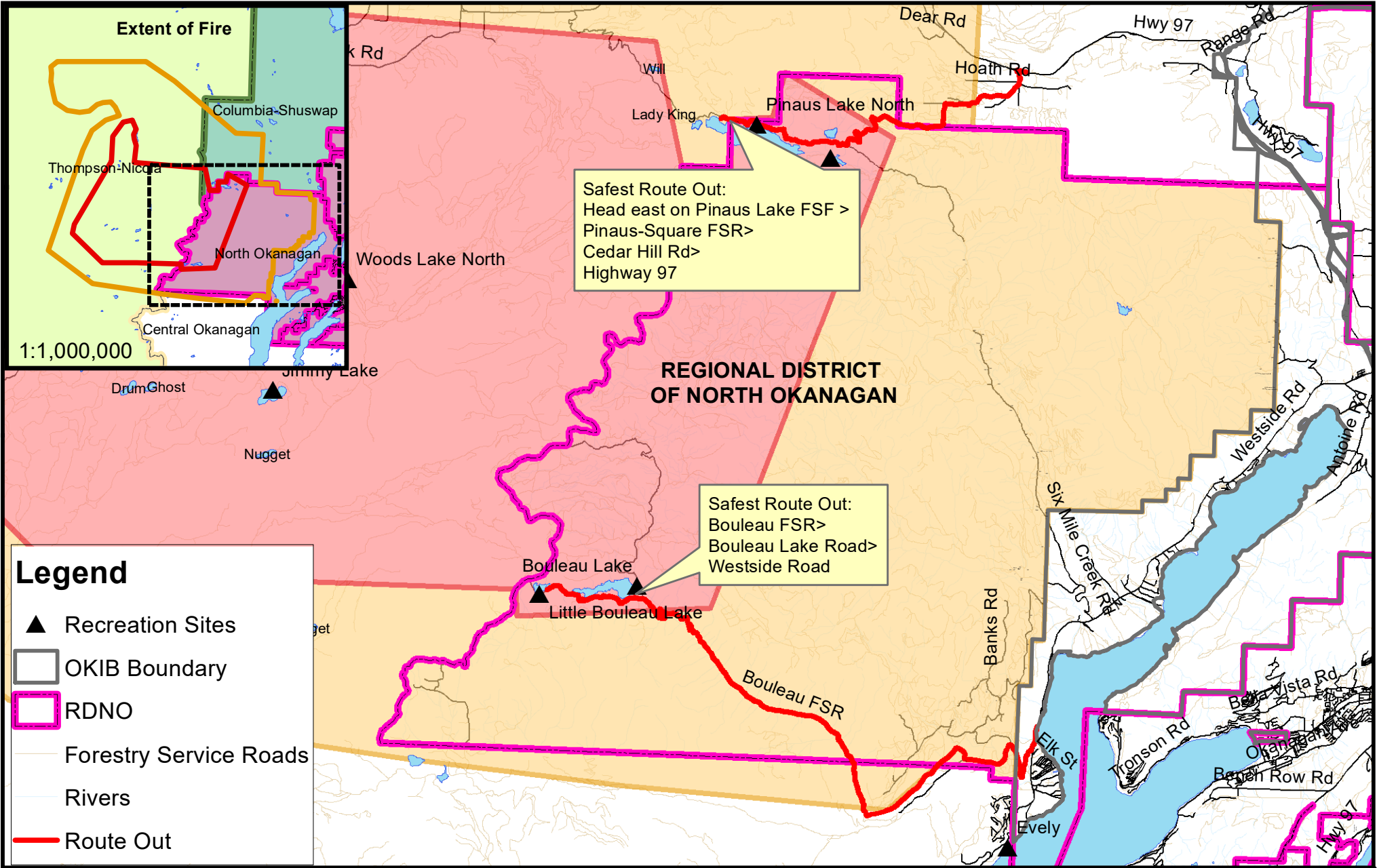
See map of Evacuation Alert area attached. Please note: The attached map is not specific to any particular address within the evacuation alert boundary but a general guideline. Any property in close proximity to the area should be prepared and ready to evacuate during threatened times.

WHAT YOU SHOULD DO:

- Locate family members and designate a meeting area outside the evacuation area should an Evacuation Order be called while separated.
- Pack essential items such as government-issued ID, medications, eyeglasses, valuable papers, immediate care needs for dependents and, if time and space permits, keepsakes for quick departure.
- Prepare to move persons with disabilities, children or neighbours, if assistance is needed.
- Prepare to take pets with you and move livestock to a safe area (if possible).
- Arrange transportation for all household members. Fill the gas tanks of personal vehicles.
- Arrange accommodation for all members of the residence, if possible.
- Wait for an Evacuation Order to be issued before evacuating.
- Monitor the news, radio and online sources for information on evacuation orders and location of Reception Centres.

Further information will be issued as updates are received from the BC Wildfire Service. Residents are encouraged to or visit www.rdno.ca, the [RDNO Facebook page](#), and listen to local radio for more information.

The White Rock Lake wildfire spans across the boundaries of multiple local governments, regional districts, and first nations. The RDNO can only speak to affected areas within our boundaries; therefore, if you are in this area but outside the boundaries of the RDNO, please check in with your local authority for information about Alerts and Orders.



Legend

- ▲ Recreation Sites
- ▭ OKIB Boundary
- ▭ RDNO
- Forestry Service Roads
- Rivers
- Route Out



EVACUATION ALERT

Evacuation Alert

Affected Areas:
Go to www.rdno.ca for a full list of evacuation alert addresses.

Evacuation Order

Affected Areas:
Go to www.rdno.ca for a full list of evacuation order addresses.

Map Date:
July 27th, 2021
4:30pm

1:175,000

0 1 2 4 6 8 10
Kilometers