
FOR IMMEDIATE RELEASE

DATE: September 13, 2024
MEDIA CONTACT: Tricia Brett, Manager, Water Quality
PHONE/EMAIL: 250.550.3700 / Tricia.Brett@rdno.ca

GREATER VERNON WATER – BOIL WATER NOTICE – 38TH STREET

In conjunction with Interior Health, the Regional District of North Okanagan (RDNO) advises customers supplied by Greater Vernon Water (GVW) in the area of 38th St between 30th Ave and 32nd Ave as well as 3709 30th Ave (see attached map) that they are on a precautionary Boil Water Notice (BWN) until sampling results confirm the drinking water is safe.

A rupture of the water main in this area resulted in a loss of water pressure and increased turbidity. As a result, the RDNO is issuing a BWN to affected areas, replacing and flushing the water main, and sampling the water main to ensure the continued safety of the water system. Crews are on-site repairing the break and the water is expected to return this afternoon (September 13, 2024).

What should customers do?

The level of service and treatment provided by the RDNO has been maintained; however, customers in the affected area should boil their water for at least one minute when preparing any food, drinking, washing fruits & vegetables, making beverages or ice or when brushing teeth.

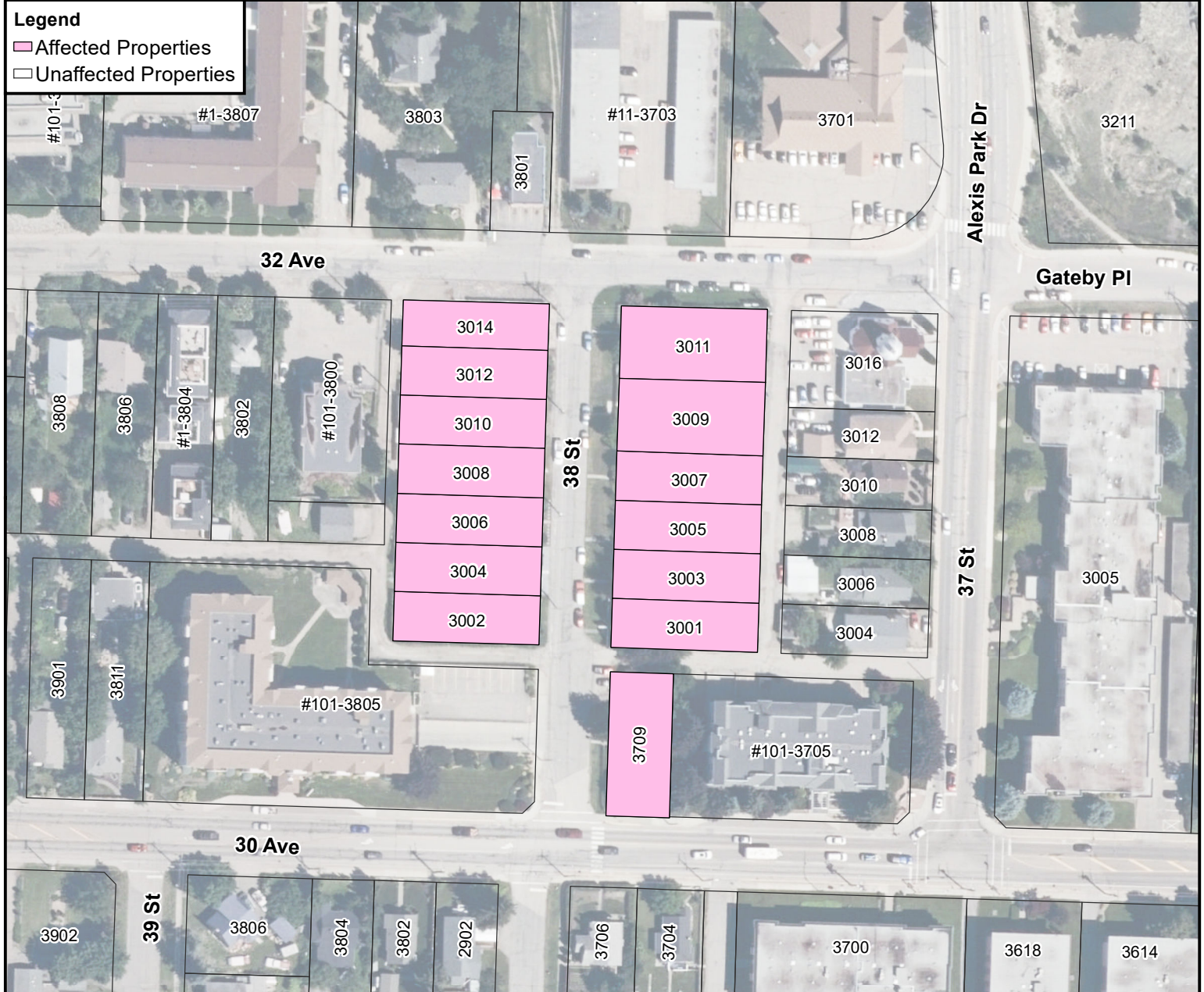
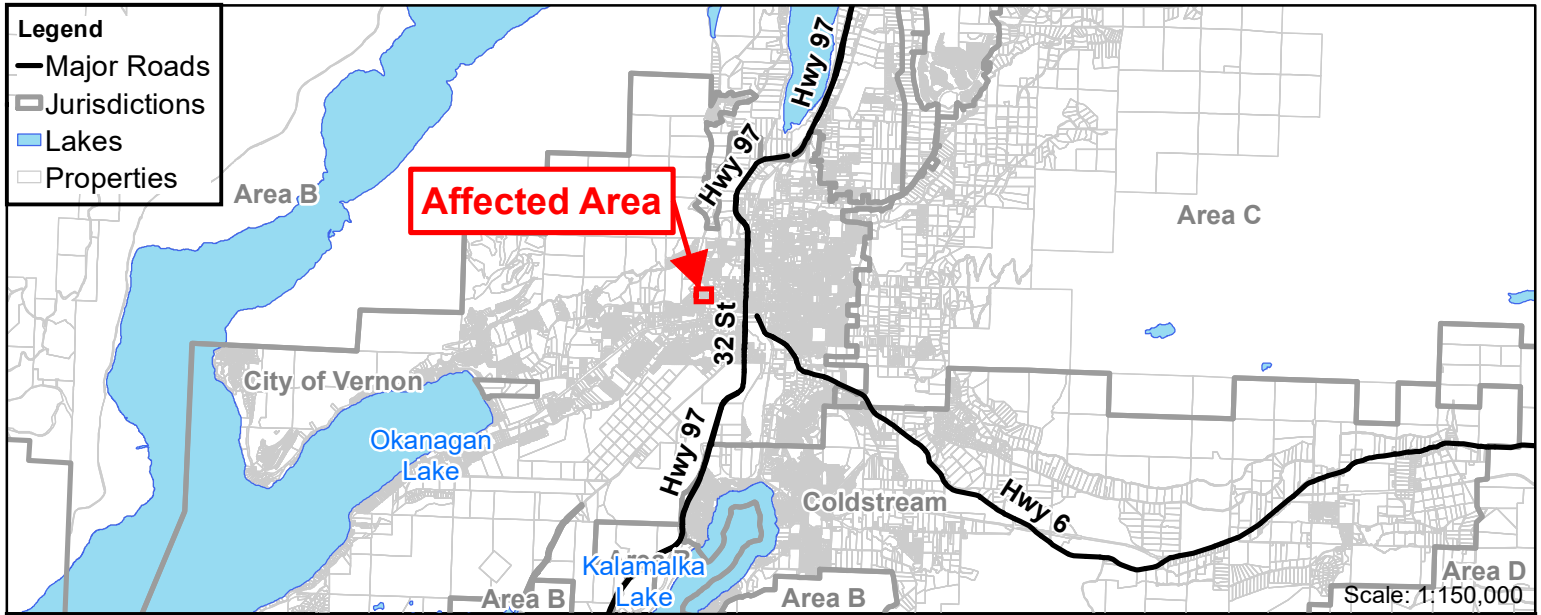
After the repairs are complete, residents in the affected area may experience reduced water pressure, discolouration of the water, and/or air in their water. Please run a cold water tap until the water has cleared. An outside tap is preferred.

Updates will be posted to www.rdno.ca/news (filter by Water Notices). You can also subscribe to receive email updates at www.rdno.ca/subscribe.

When the notice is rescinded, it will be posted on the RDNO website.

If you have questions related to the time of the repair, please call Sunridge Contracting Ltd Steve Campbell 250-299-7816

If you have any other questions, contact the RDNO Utilities Department at 250-550-3700.



This map was compiled by RDNO, using data believed to be accurate; however, a margin of error is inherent in all maps. This product is distributed without warranties of any kind, either express or implied, including but not limited to warranties of sustainability or particular purpose or use.

Affected Properties



Plot Date: Sep 13, 2024

Scale: 1:1,500
Plot Size: 8.5" x 11"

